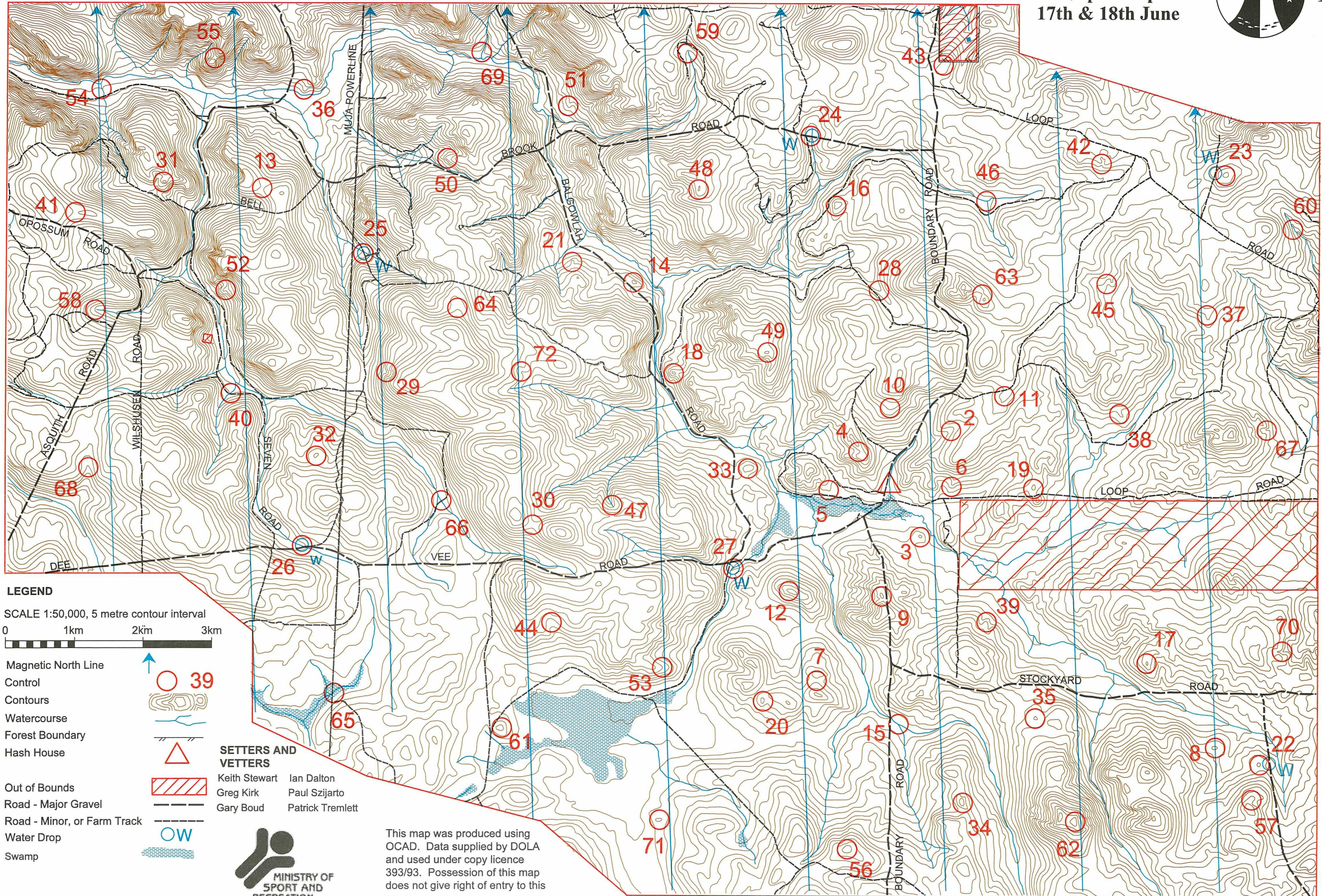


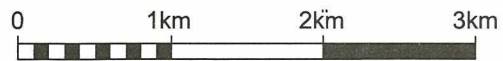
Beyond The Boundary 24 Hour Rogaine

WARA 2000 State Championships
17th & 18th June



LEGEND

SCALE 1:50,000, 5 metre contour interval



- Magnetic North Line
- Control
- Contours
- Watercourse
- Forest Boundary
- Hash House
- Out of Bounds
- Road - Major Gravel
- Road - Minor, or Farm Track
- Water Drop
- Swamp

SETTERS AND VETTERS

Keith Stewart	Ian Dalton
Greg Kirk	Paul Szijarto
Gary Boud	Patrick Tremlett



This map was produced using OCAD. Data supplied by DOLA and used under copy licence 393/93. Possession of this map does not give right of entry to this area.

Beyond The Boundary, 24 Hour Rogaine, 17-18 June 2000.

No.	Description	Points
		20
2	The gully	20
3	The knoll	20
4	The saddle	20
5	The spur	20
6	The spur	20

7	The saddle	40
8	The knoll	40
9	The knoll	40
10	The spur, broad	40
11	The spur, broad	40
12	The knoll, western end	40

13	The saddle	50
14	The knoll	50
15	The watercourse junction	50
16	The knoll	50
17	The knoll	50
18	The knoll	50

19	The knoll	50
20	The knoll	50
21	The spur	50
22	The knoll. Water drop: The road (western side)	50
23	The knoll, broad. Water drop: The track (eastern side)	50
24	The watercourse. Water drop: at the control	50

25	The watercourse. Water drop: at the control	60
26	The watercourse, indistinct. Water drop: at the control	60
27	The watercourse junction, indistinct. Water drop 80 m @ 320° on a track	60
28	The gully	60
29	The gully	60
30	The saddle	60

31	The knoll, north of the thicket	60
32	The knoll, broad	60
33	The knoll	60
34	The knoll	60
35	The knoll	60
36	The spur	60

No.	Description	Points
37	The spur	60
38	The spur	60
39	The spur	60
40	The watercourse, indistinct	60
41	The saddle	60
42	The gully	60

43	The knoll, broad	70
44	The gully	70
45	The gully, shallow	70
46	The watercourse junction	70
47	The gully	70
48	The knoll	70

49	The knoll	70
50	The spur	70
51	The spur	70
52	The spur	70
53	The spur	70
54	The watercourse, distinct	70

55	The saddle	80
56	The knoll	80
57	The spur	80
58	The watercourse	80
59	The watercourse, indistinct, head of	80
60	The watercourse, distinct	80

61	The knoll, broad	90
62	The knoll	90
63	The saddle	90
64	The spur, broad, eastern edge	90
65	The watercourse	90
66	The watercourse, at the intersection with the track	90

67	The gully	100
68	The gully, on an overgrown track	100
69	The watercourse, distinct. Caution! Deep watercourse!	100
70	The gully	100
71	The knoll	100
72	The gully	100

Important Information

Maps: from 8.00 am Saturday
Novice Briefing: 10.00 am Saturday
Control Cards: 11.30 am Saturday
Briefing: 11.45 am Saturday
Start: 12.00 noon Saturday
Finish: 24 hours Later

Hash House

Opens 4.00 pm Saturday.
 Closed approx 1.00 pm Sunday.

Astronomical

Sunset Saturday: 5.14 pm
 Moonrise Saturday: 5.39 pm
 Sunrise Sunday: 7.17 am
 Moonset Sunday: 8.05 am

Controls Used: 71
Total Points: 4480

Water drops:

Controls 22-27 inclusive

Patrolled Roads:

1. Boundary Road (between Bell Brook and Stockyard Roads).
2. Stockyard Road and south along Miner Road to control 22.
3. Dee Vee Road east of control 26
4. Bell Brook Road east of the Muja transmission line.
5. Loop Road